



Contents lists available at ScienceDirect

journal homepage: <http://www.elsevier.com/locate/clnu>



Department of Gastrointestinal Surgery/Department of Clinical Nutrition, Beijing Shijitan Hospital, Capital Medical University, Beijing, 100038, China
Beijing International Science and Technology Cooperation Base for Cancer Metabolism and Nutrition, Beijing, 100038, China
Key Laboratory of Cancer FSMP for State Market Regulation, Beijing, 100038, China
Department of Epidemiology, College of Public Health, Zhengzhou University, Zhengzhou, 450000, China

ARTICLE INFO

Article history:
10 _ 2022
18 | 2022

Keywords:

SUMMARY

Background and aims:

Methods: 6359

Results:

1.072–1.157; <.001)

Conclusions:

© 2022

*
100038,
E-mail address:

3–5. Wi
 6–8.
 9,10.
 11,12.
 13–15.

2.1. Patients

1800020329),
 2012 40
 2019.
 <24
 6

2.2. Data collection and follow-up

2
 1
 2

2.3. Outcomes

16;
 3

2.4. Statistical analysis

±
 W
 95% fi (L)
 P < 0.05
 4.05 (// . - .).

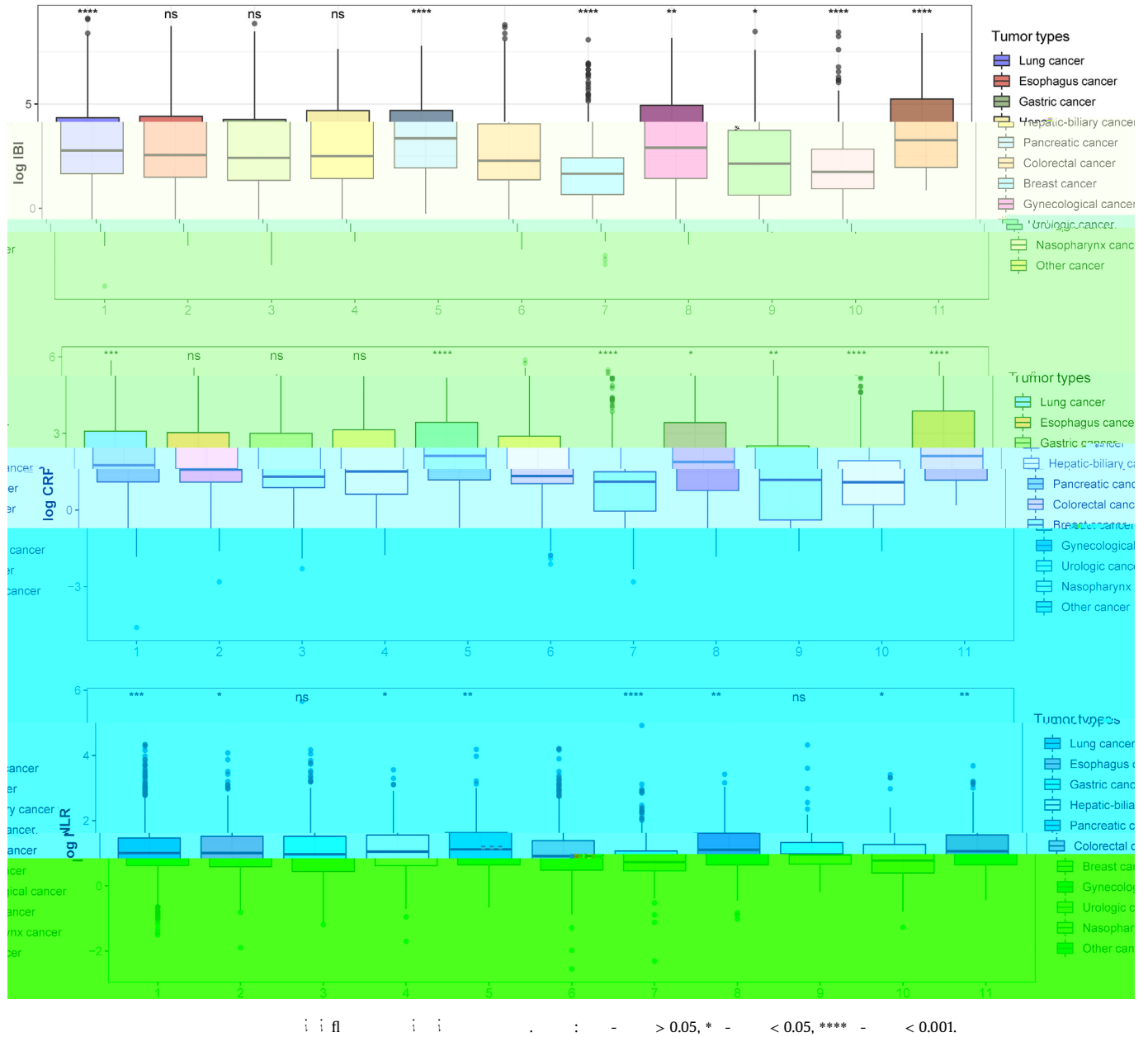
3.1. Measurements of serum systemic inflammation biomarkers

5
 1
 2
 (/) × (/ μ) / (/ μ)

(, 0.649; -i X, 0.648).

3.2. Clinicopathological characteristics

6359 (60.4%) (3 2517 (39.6%) 59.40 ± 11.24 , 3842 2817 (44.3%) , 3542 (55.7%) 16.



3.7. Combination of inflammatory burden and nutrition in the prognosis assessment

3.8. Randomized internal validation

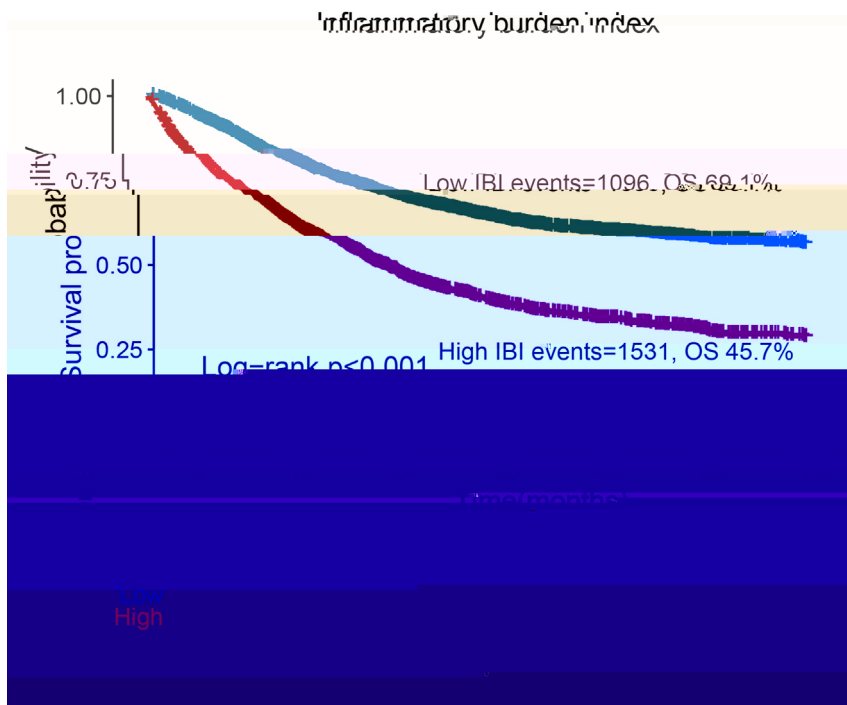
(n = 12) (OR = 4.807; 95% CI, 3.295–7.011; P < .001).

(n = 6) (OR = 2.260; 95% CI, 2.018–2.531; P < .001).

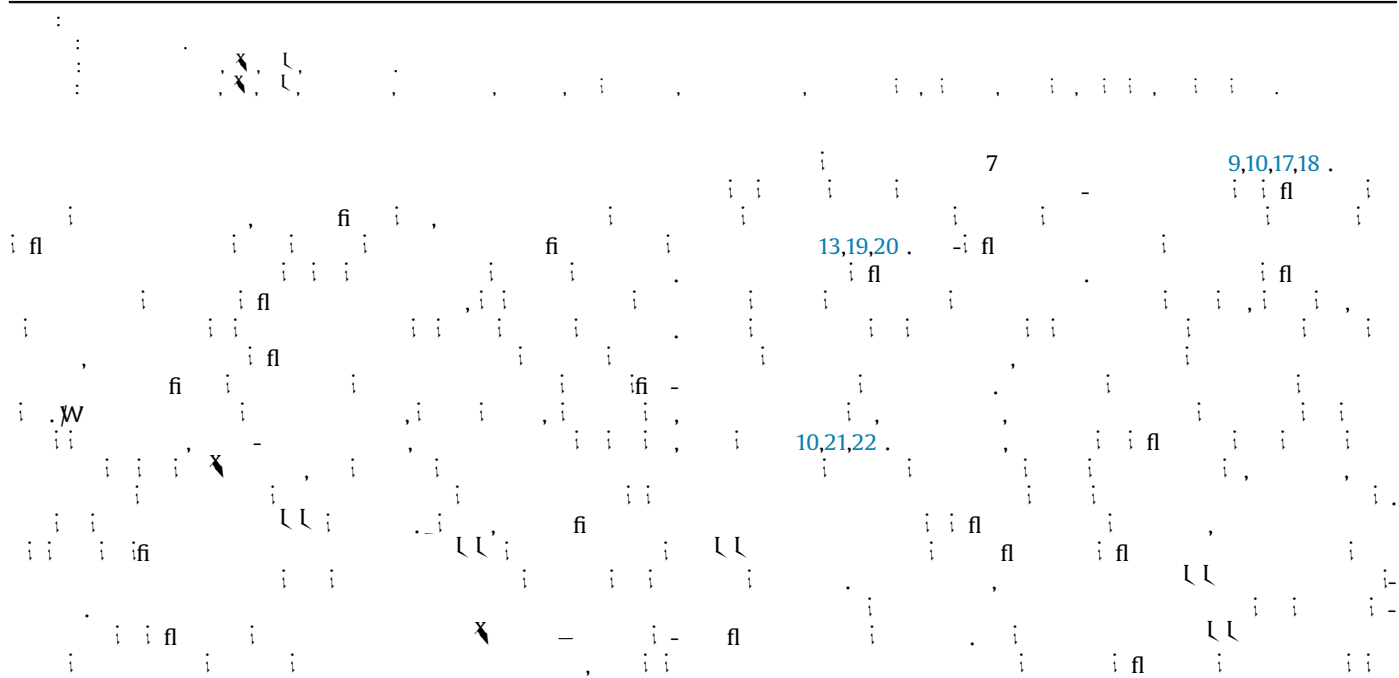
(n = 4452) (OR = 1.114; 95% CI, 1.072–1.157; P < .001).

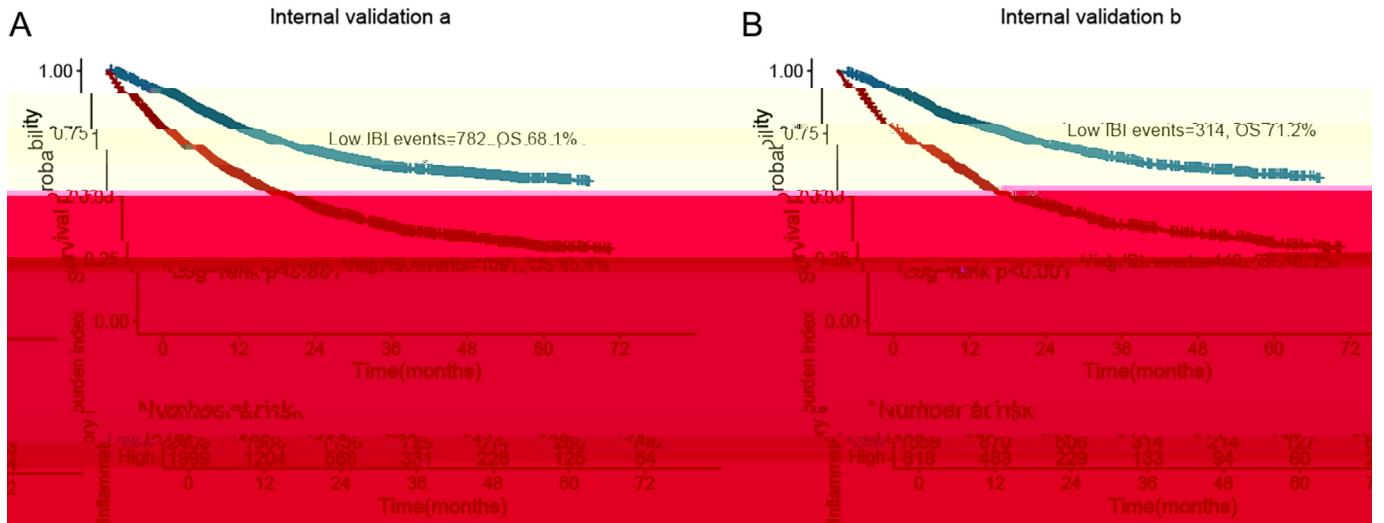
(n = 1907) (OR = 1.125; 95% CI, 1.060–1.193; P < .001).

(n = 13) (OR = 1.809–2.258; P < .001).

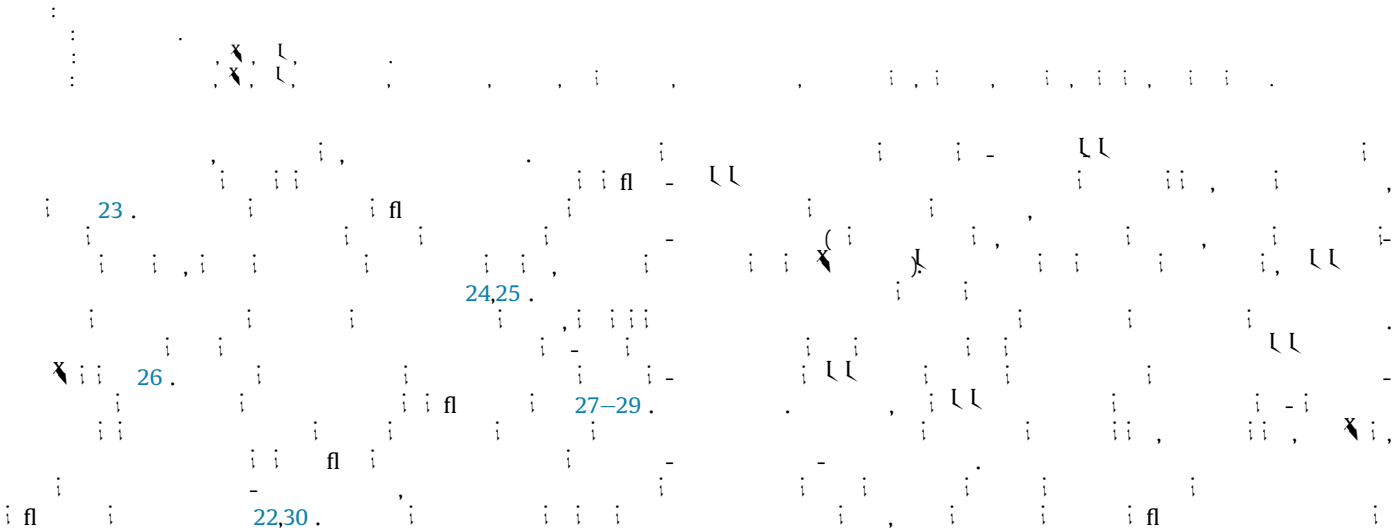


		1.145 (1.113,1.178)	<0.001	1.097 (1.065,1.129)	<0.001	1.103 (1.072,1.136)	<0.001
1 (<16)			<0.001		<0.001		<0.001
2 (≥16)		2.342 (2.166,2.531)		1.829 (1.69,1.98)		1.706 (1.574,1.85)	
1 (<4.08)							
2 (4.08–11.37)		1.373 (1.209,1.559)	<0.001	1.207 (1.062,1.371)	0.004	1.154 (1.015,1.311)	0.029
3 (11.37–65.47)		2.238 (1.988,2.519)	<0.001	1.670 (1.481,1.883)	<0.001	1.520 (1.347,1.716)	<0.001
4 (≥65.47)		3.239 (2.891,3.63)	<0.001	2.342 (2.085,2.63)	<0.001	2.128 (1.892,2.395)	<0.001





	HR (95% CI)	p-value	HR (95% CI)	p-value	HR (95% CI)	p-value
()	1.165 (1.122,1.209)	<0.001	1.103 (1.063,1.145)	<0.001	1.114 (1.072,1.157)	<0.001
1 (<16)		<0.001		<0.001		<0.001
2 (≥16)	2.283 (2.082,2.504)		1.789 (1.629,1.965)		1.666 (1.514,1.832)	
1 (<4.16)						
2 (4.16–11.88)	1.369 (1.178,1.591)	<0.001	1.163 (1.1,1.353)	0.05	1.110 (0.954,1.292)	0.178
3 (11.88–69.09)	2.263 (1.967,2.604)	<0.001	1.655 (1.436,1.907)	<0.001	1.495 (1.295,1.725)	<0.001
4 (≥69.09)	3.209 (2.803,3.675)	<0.001	2.286 (1.991,2.625)	<0.001	2.078 (1.807,2.391)	<0.001
()		<0.001		<0.001		<0.001
()	1.146 (1.087,1.209)	<0.001	1.116 (1.054,1.182)	<0.001	1.125 (1.060,1.193)	<0.001
1 (<16)		<0.001		<0.001		<0.001
2 (≥16)	2.485 (2.149,2.874)		1.924 (1.659,2.232)		1.800 (1.547,2.093)	
1 (<3.88)						
2 (3.88–10.44)	1.388 (1.091,1.767)	0.008	1.258 (0.987,1.602)	0.064	1.202 (0.942,1.533)	0.139
3 (10.44–59.47)	2.207 (1.764,2.760)	<0.001	1.698 (1.354,2.13)	<0.001	1.559 (1.240,1.961)	<0.001
4 (≥59.47)	3.525 (2.854,4.354)	<0.001	2.527 (2.036,3.136)	<0.001	2.273 (1.821,2.838)	<0.001
		<0.001		<0.001		<0.001



20

2021.

21